

GV300 Quick Start

Page 1 : Basic Operation

1

Check Parts List

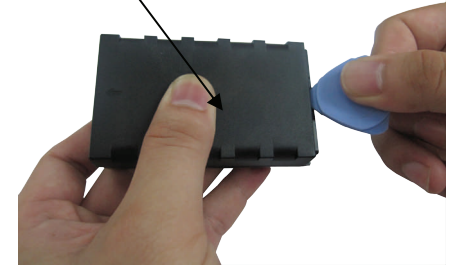


The USB Data_Cable_M is not in the delivery list. Please contact your vendor for it.

2

Open the case

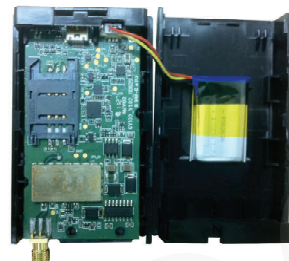
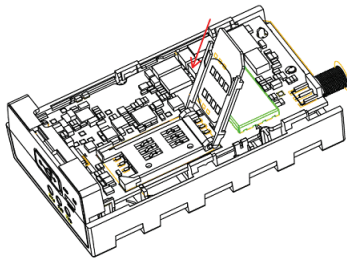
triangular-pry-opener



3

Install SIM Card

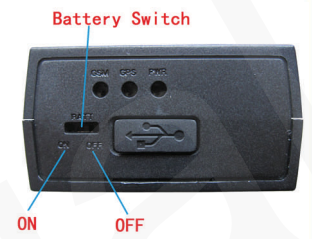
Install the battery



4

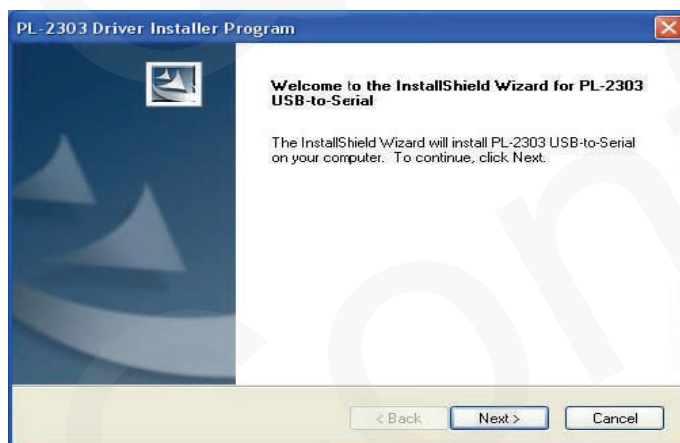
Close the case

Switch ON Battery



5

Find "PL2303_Prolific_DriverInstaller_v10518.zip" in develop suit and install the drive for PL2303. If you have already installed it please go to Step 6.



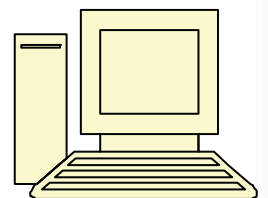
6

Connect GV300 to computer by USB Data_Cable_M.



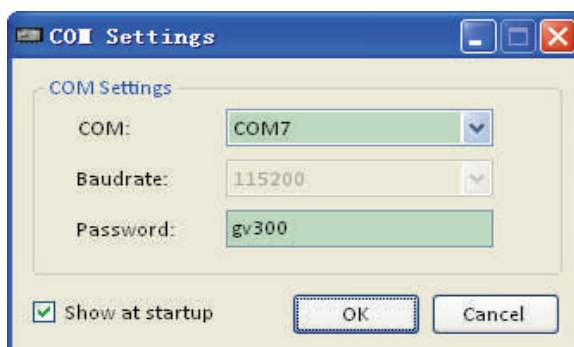
To mini USB

To computer



7

Find "Queclink GV300 Manager Tool Vx.xx.exe" in develop suit and run it to configure the running parameters of GV300. Please refer to Page 2 for detail.



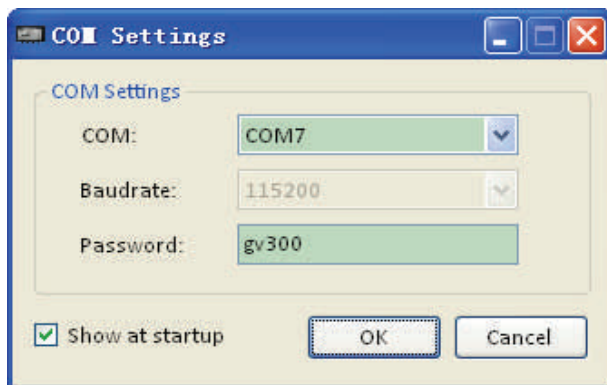
8

Before the first time using GV300, please full charge the battery.



1

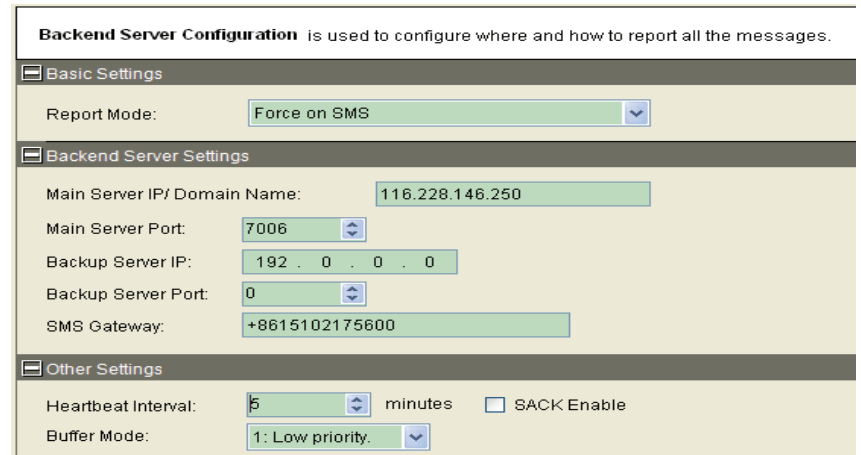
Run manager tool. Select correct Com port and input default password "gv300". Then press OK.



2

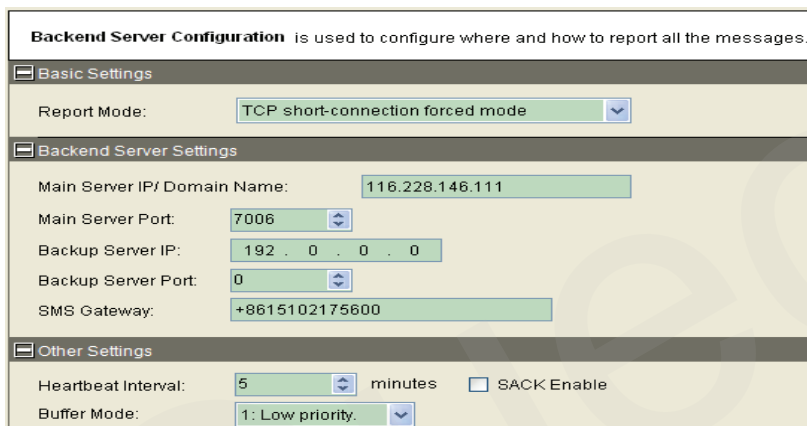
If you want to test the GV300 by SMS then set "Report Mode" to "SMS" and input the phone number which you want to receive the SMS from GV300. After that you can go to Step 6.

Otherwise please go to Step 3



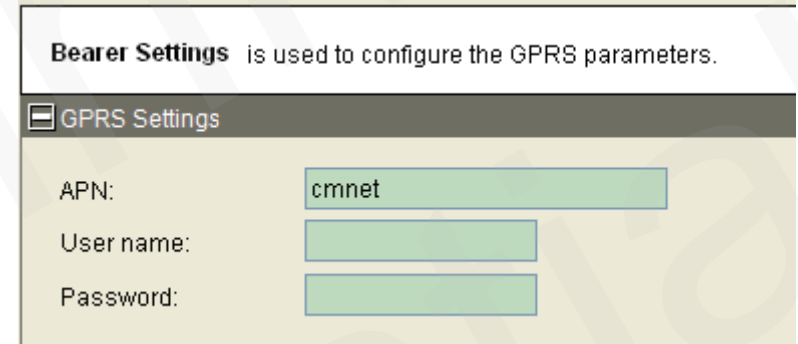
3

Set "Report Mode" to "TCP Short Connection". input the IP address and port number of the backend server. Please make sure the IP address can be accessed by internet and the data sends to this address can be received.



4

Please contact your SIM card provider and get the APN information for GPRS. Input it in GTBSI setting.



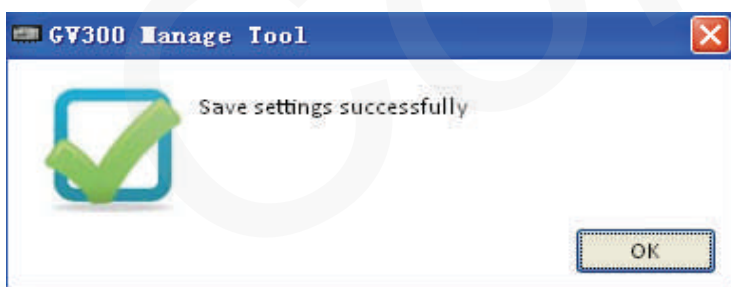
5

Press the "Send" button and update the parameters of GV300. Then the GV300 can report information to your backend server or SMS receiver.

Note: These commands can also be sent to GV300 by SMS.

AT+GTBSI=gv300,cmnet,,,,,FFFF\$

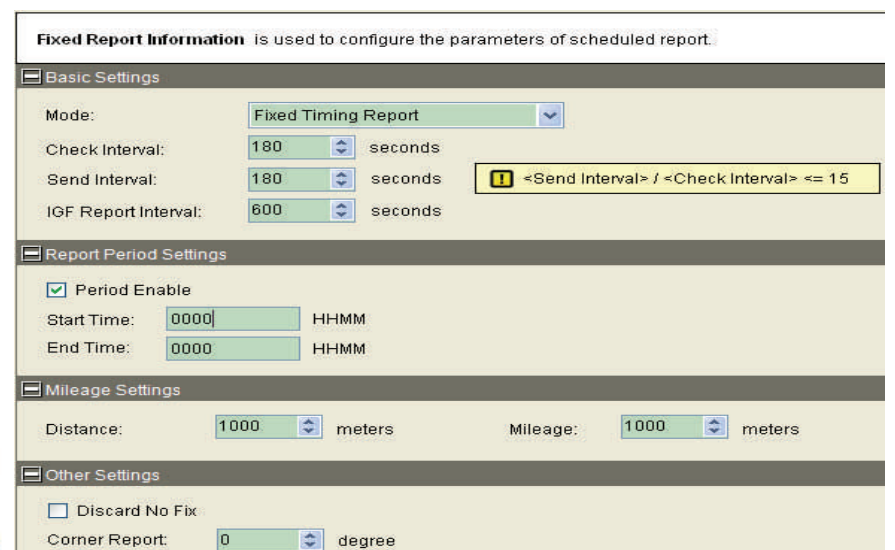
Command has been accepted when you see the success window.



6

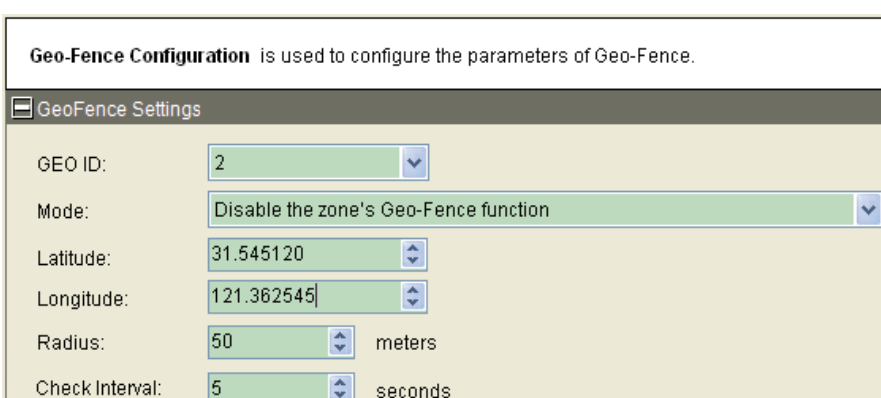
Set the parameters of scheduled fixed timing report so that the GV300 will report it's position to backend server period periodically. Press "Send" button to update the parameters.

Follow screen shot shows how to configure the GV300 to report it's position every 3 minutes.



7

The following screen shot shows how to create a Geo-Fence rule. Press "Send" button to update the parameters.



After these steps. GV300 will have some basic tracking functions like scheduled timing report and Geo-Fence. For other advanced functions of GV300 please refer to "GV300 @Tracker Air Interface Protocol" or visit our website.